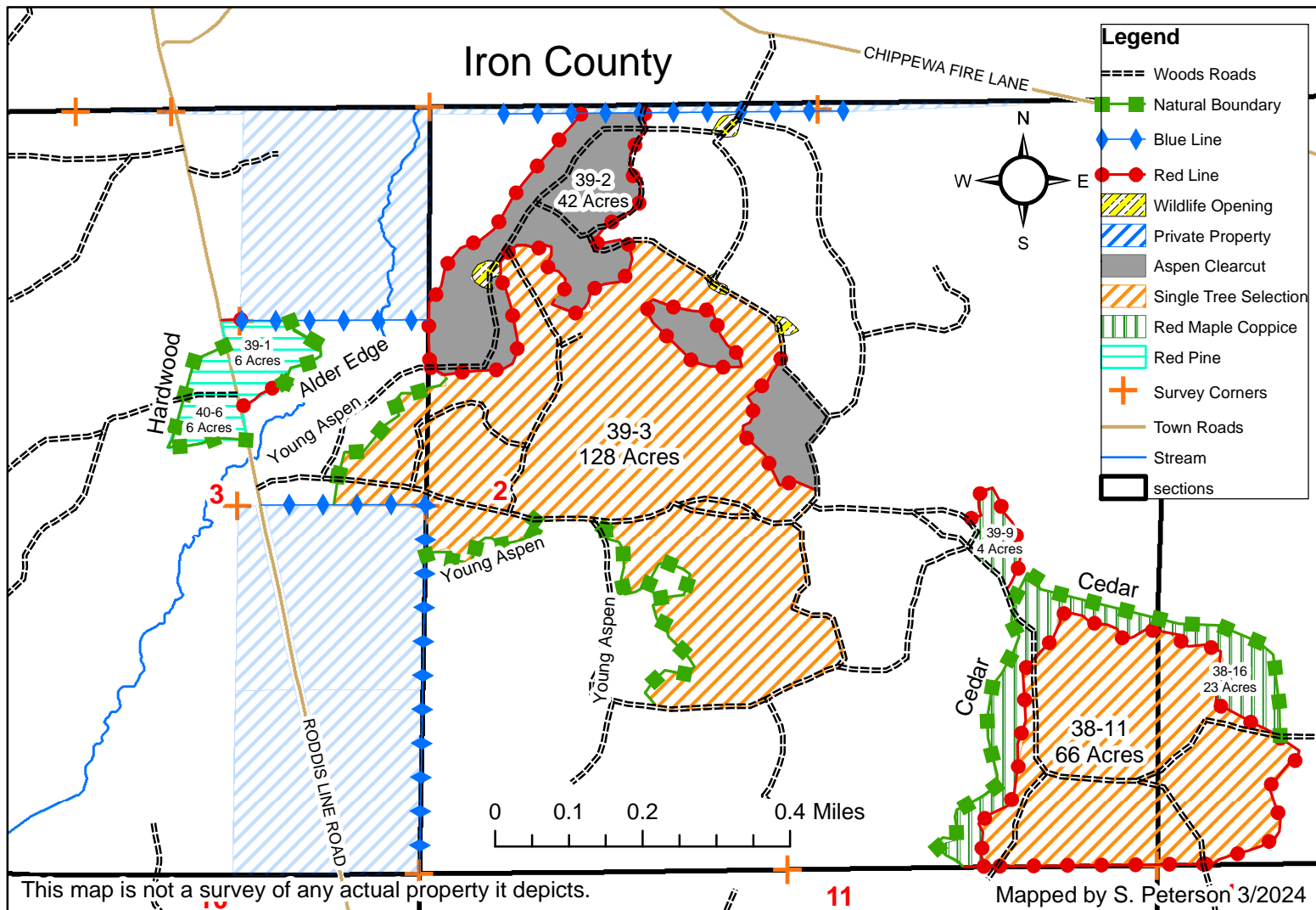


Ashland County Forestry Dept.  
 304 W. Michigan St.  
 P.O. Box 155  
 Butternut, WI 54514  
 (715) 769-3777

Timber Sale Map  
 Tract # 1-24  
 275 Acres  
 Sections 1, 2, & 3 T-42-N R-1-E  
 Town of Agenda

# Mini Monster



### Cutting Restrictions:

- Excessive rutting or excessive damage to residual trees shall result in the suspension of logging.
- The sale must be cut progressively.
- No new woods roads shall be constructed without prior approval of the county forester.
- Wildlife openings can be used for decking and hauling but must be clear of debris and leveled after harvest
- Care must be taken to preserve survey monuments.
- Care must be taken to not excessively damage existing saplings.
- Do not cut snags. Utilize all felled trees to a 4" minimum top diameter for pulpwood and a 10" diameter for sawlogs.

### Cutting Specifications:

- Red Pine(12ac):** Cut only Red Pine, Spruce, and balsam 1" and greater. Leave all hardwood stand.
- Single Tree(194ac):** Cut all orange marked trees within the sale boundary. Also cut aspen, balsam fir, ash, and ironwood that contains at least one 100" pulp stick.
- Aspen Clearcut(42ac):** Cut all stems 1"and greater.
- Red Maple Coppice(27ac):** Cut all trees 2" and larger except reserve tree. Reserve trees are Oak, Yellow Birch, Cedar, and Hemlock.

Species	Estimated Volumes	Min. Acceptable Bid	Species	Estimated Volumes	Min. Acceptable Bid
MX Pulp	1500 Cords	\$15/cord	Hard Maple Logs	25 MBF	\$120/MBF
Aspen Pulp	800 Cords	\$15/cord	Mx Logs	58 MBF	\$100/MBF
Red Pine	220 Cords	\$45/cord	Ash Logs	120 MBF	\$100/MBF
Ash Pulp	250 Cords	\$1/cord	Basswood Logs	47 MBF	\$100/MBF
Basswood Pulp	100 Cords	\$1/cord			