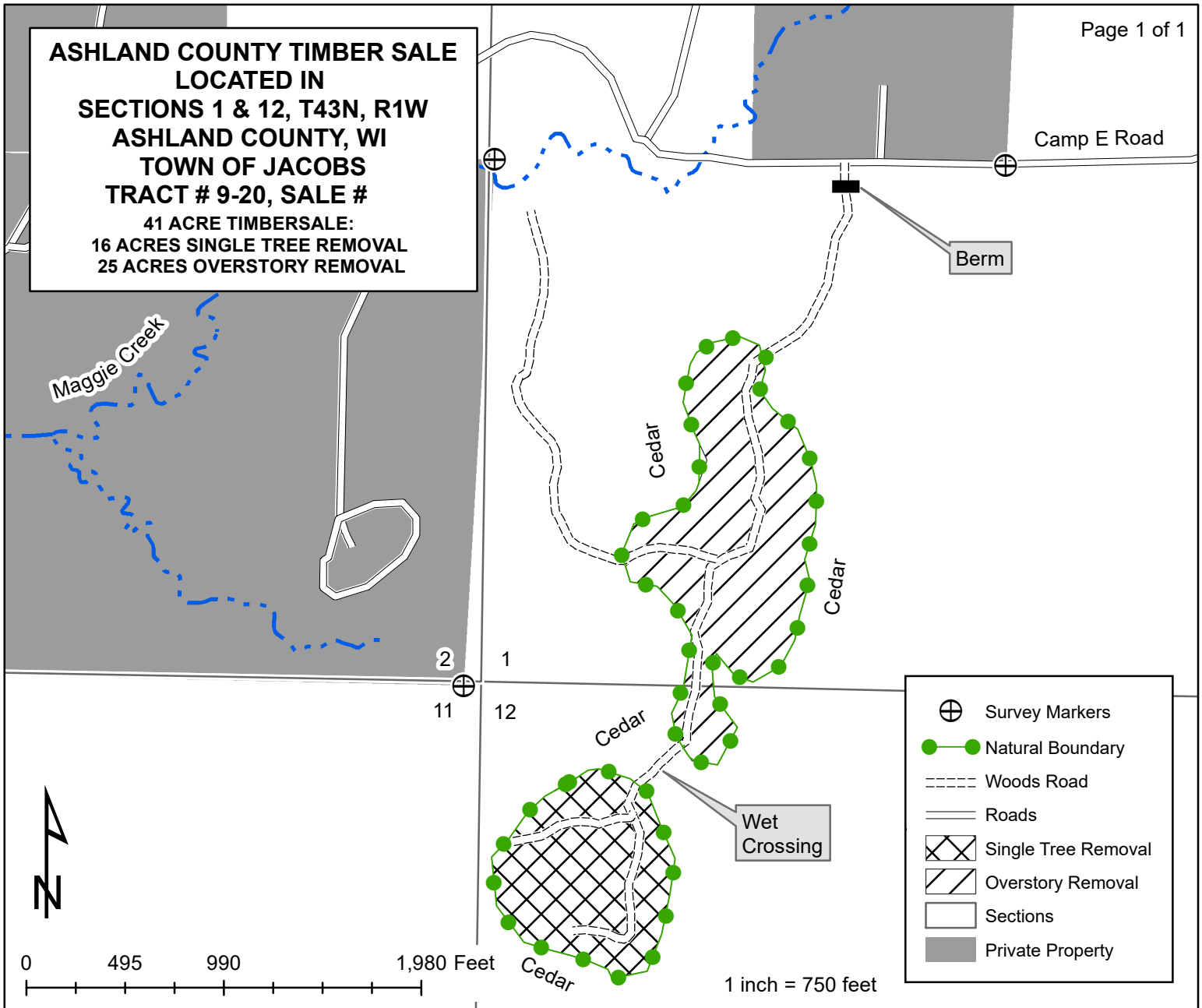


**ASHLAND COUNTY TIMBER SALE  
LOCATED IN  
SECTIONS 1 & 12, T43N, R1W  
ASHLAND COUNTY, WI  
TOWN OF JACOBS  
TRACT # 9-20, SALE #  
41 ACRE TIMBERSALE:  
16 ACRES SINGLE TREE REMOVAL  
25 ACRES OVERSTORY REMOVAL**



<b>SPECIES</b>	<b>ESTIMATED VOLUME</b>	<b>MINIMUM ACCEPTABLE BID</b>
Mixed Hardwood Pulp	465 Cords	\$15.00 / Cord
Fir Pulp	10 Cords	\$15.00 / Cord
Spruce Pulp	15 Cords	\$15.00 / Cord
Hard Maple Logs	1 MBF	\$120.00 / MBF
Mixed Hardwood Logs	4 MBF	\$100.00 / MBF

**CUTTING SPECIFICATIONS:**

- In both areas reserve all: oak, pine, cedar, hemlock, and any snags not posing a safety hazard.
- In the overstory removal area, reserve one >20 inch yellow birch every 300 feet where possible.
- In the overstory removal area, cut all non-reserve trees containing one or more 100-inch pulp sticks.
- In the single tree removal area, cut all orange-painted trees and all ash, balsam fir, spruce, and ironwood with one or more 100-inch pulp sticks.
- Harvesting will be limited to dry summer or frozen winter ground conditions.
- Utilize all felled trees to a 4" minimum top diameter for pulpwood and a 10" minimum top diameter for sawlogs.

**CUTTING RESTRICTIONS:**

- Excessive rutting or excessive damage to residual trees shall result in the suspension of logging operations.
- The sale must be cut progressively.
- No new woods roads shall be constructed without prior approval by the county forester.
- Avoid equipment operation in areas of advanced regeneration where there is no merchantable or harvestable timber.
- Berm roads when the sale is not active, and upon completion of logging operations.