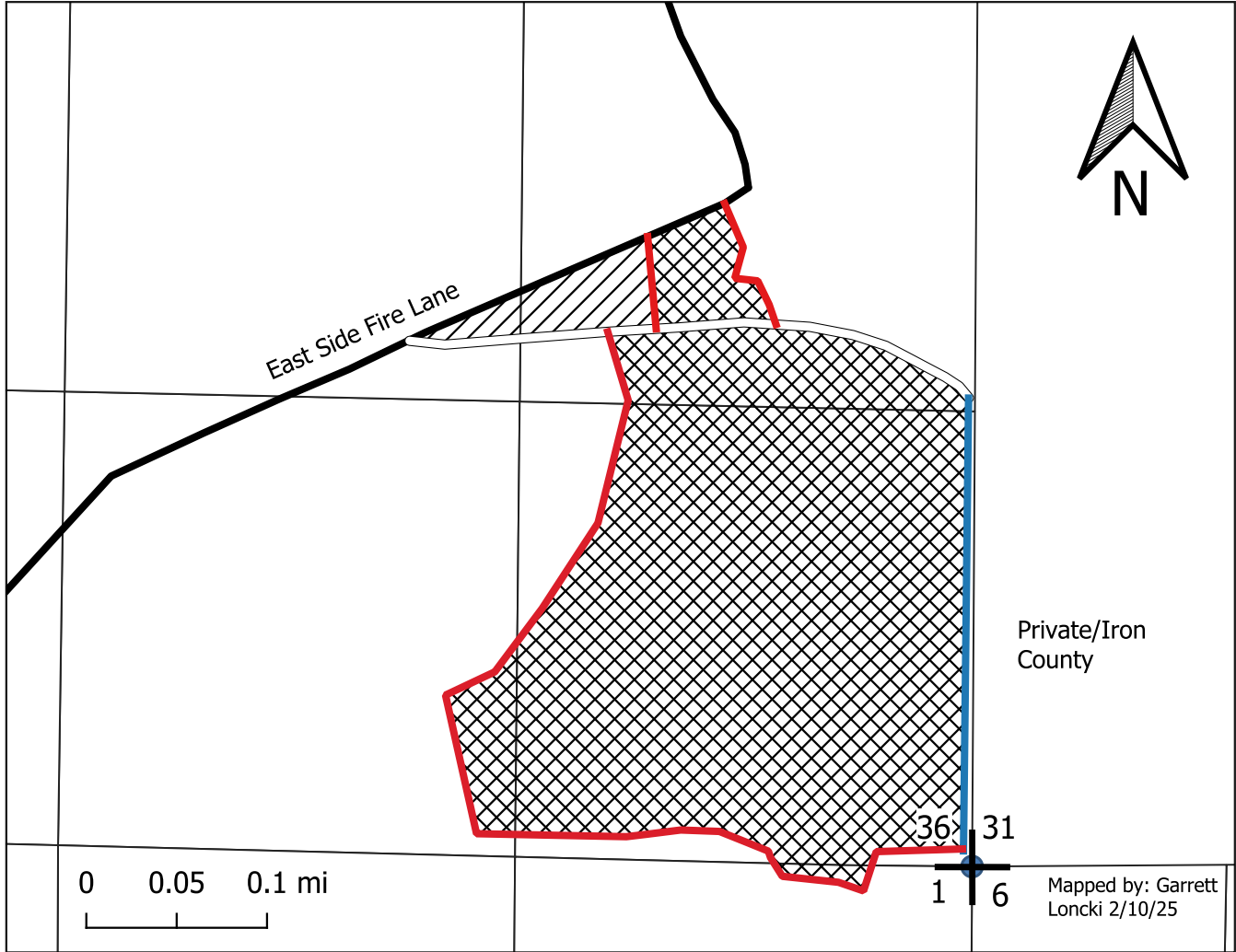


Ashland County Forestry Dept.  
 304 W. Michigan St.  
 P.O. Box 155  
 Butternut, WI 54514  
 (715)769-3777

# Boot Heel #2

Timber Sale Map  
 Tract 1-25, 47 Acres  
 Sec. 36 T-43-N R-1-W  
 SE1/4 SW1/4, NE1/4 SW1/4, SE1/4 NW1/4,  
 SE1/4 SW1/4  
 Town of Jacobs



## Cutting Specifications:

This map is not a survey of any property it depicts.

Single Tree Selection (45 Acres): Cut all orange marked trees and merchantable ash.

Coppice Cut with Reserves (2 Acres): Cut all stems 1" and Larger EXCEPT those marked with GREEN PAINT.

### Cutting Restrictions:

**DRY OR FROZEN GROUND ONLY**

Excessive rutting or damage to residual trees shall result in the suspension of logging.  
 No new woods roads shall be constructed without prior approval from the county forester.

Care must be taken to preserve survey monuments.

Care must be taken to not excessively damage saplings.

utilize all felled trees to a 4" minimum top diameter for pulpwood and 10" for sawlogs.

Rock or berm roads when complete.

Retain all snags and den trees that do not pose a safety hazard.

## Legend

- Red Paint Line
- Blue Paint Line
- Woods Road
- Coppice Cut With Reserves
- Section Marker
- Single Tree Selection
- Road
- 1/4 1/4 Lines

| Species         | Estimated Volumes | Min. Acceptable Bid |
|-----------------|-------------------|---------------------|
| MX Pulp         | 360 cords         | \$15.00/cord        |
| Basswood Pulp   | 210 cords         | \$1.00/cord         |
| Aspen           | 15 cords          | \$15.00/cord        |
| Balsam Fir      | 4 cords           | \$5.00/cord         |
| Basswood Logs   | 60 mbf            | \$100/MBF           |
| Hard Maple Logs | 7 mbf             | \$120/MBF           |
| Ash Logs        | 3 mbf             | \$100/MBF           |

MX Pulp contains: 87% mh, 7% ash, 3% yb, 3% mr.